

I Lay It Down

CCLI #2558851
See Matthew 26, Mark 14,
Luke 22, Hebrews 5:7-8

(Non-profit Duplication Permitted)

Music by Elton Smith
Words by Elton Smith and Larry Holder

Em D Em D Em D Em B7

Verse 1 In the
Verse 2 I'm a -

Em D Em

Gar - den of Geth - se - ma - ne, I pon - der;
lone, for all my friends have grown too wear - y.

B B7 Em D G

With a sor - row un - to death, to You I cry.
In the dark - ness of the hour, I am un - done.

B Am G

Tho' my cal - ling leads me on - ward to the suff -
Yet a - gain, I plead and pray, Dear Fa - ther, take

D D#dim Em B B7

'ring of the cross, I pray this cup would pass me
this cup a - way, and spare the suff - 'ring of Your

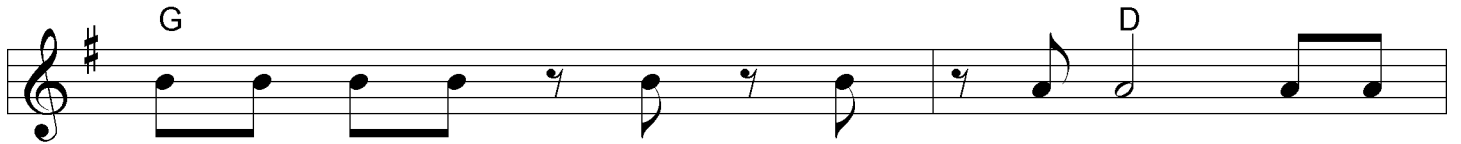
Em § Em G

by. Chorus 1 Must I lay down my life in a -
Son. Chorus 2 If the sha - dow of death must pass
(follows verse 4)

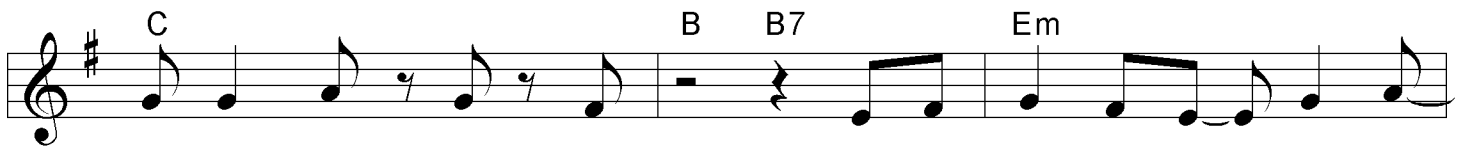
I Lay It Down (page 2)



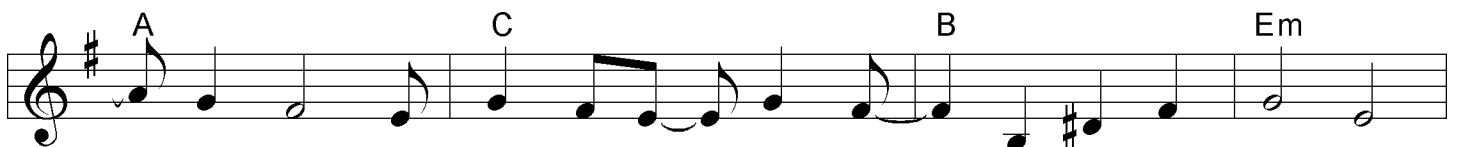
go - ny, Must I bear all the sin and shame? Must You
this way, As the wag - es of sin are borne, Tho' the



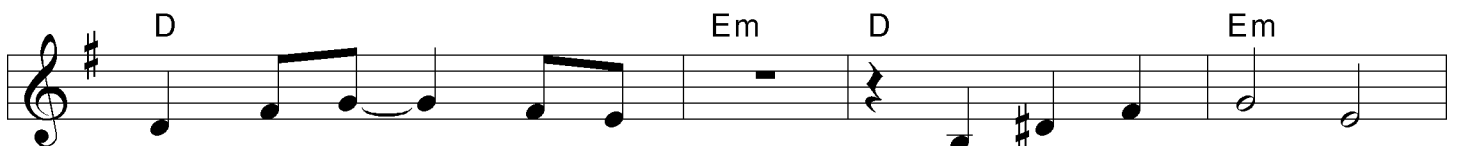
soon turn Your face a - way from me, As the
wrath and judge - ment I must bear Leave me



peo - ple mock my Name? There is no - thing that You can -
bat - tered, bruised, and torn, If the bear - ing of the cross



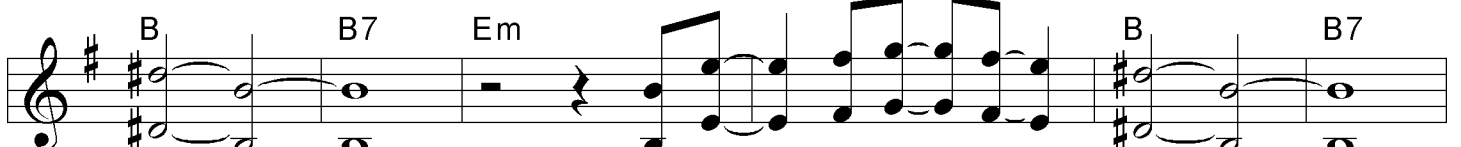
not do, So once a - gain, I cry: My Fa - ther, let this
must come Be - fore I wear the crown, I yeild my life to



cup now pass me by. My Fa - ther, let this
You; I lay it down. I yeild my life to



cup now pass me by! *Bridge:* Ab - ba, Fa - ther! I
You; I lay it down!



cry, Must I be cru - ci - fied?

I Lay It Down (page 3)

G D Em B

Must I shed my blood up - on the ground?

G D Em B

Must I be led to wear a thor - ny crown?

G D Em B Em

Must I face the cold-ness of the tomb? Please, Fa - ther,

B Em B Em

must I die?

Verse 3

I a - wak - en those who close

Verse 4

For this mo - ment I was born;

D Em B B7 Em

their eyes in slum - ber. Now the hour has come; be - tray -
I can - not fal - ter. As the Lamb, I come to give

D G B Am

al draw - ing near. Soon the sol - diers will de - scend,
my life for all. Since be - fore the world be - gan,

G D D#dim Em B

And all the suff - 'ring will be - gin, And my dis - ci - ples
My death was in our mas - ter plan, And I must an - swer

I Lay It Down (page 4)

B7 Em *2nd time (verse 4) D.S. al Coda*

flee to in the fear. call:

CODA

Em B B7 Em B B7

Instrumental

G D C B

Tho' I dread the tor - ture, death, and grave,

G D C B B7

Tho' I pray my life some-how be saved, If the

Em A C

bear - ing of the cross must come Be - fore I wear the crown,

B B7 Em D Em D

I give my life to You; I lay it down. I give my

Em D Em

life to You; I lay it down!